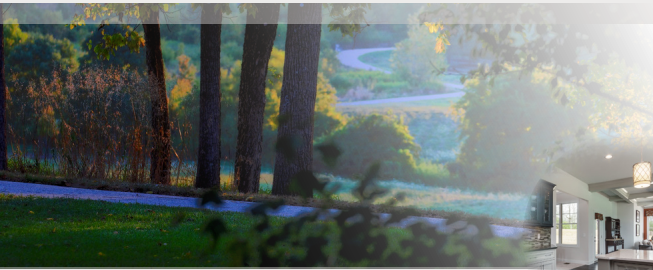


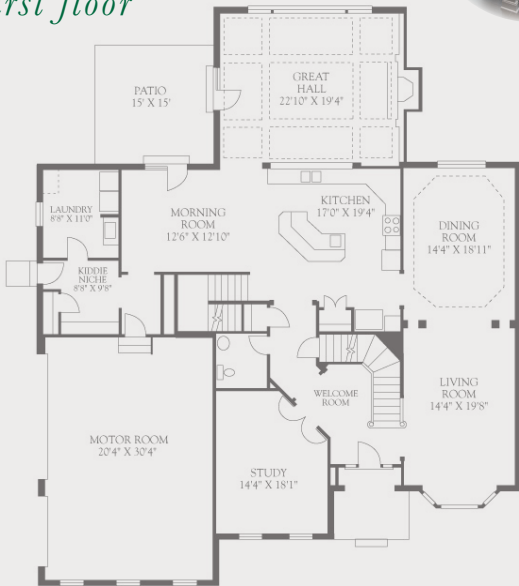


# MARK BRADLEY HOMES

FABULOUS FIVE BEDROOM PLAN



first floor



## STERLING

- STANDARD 10' CEILING AND 8' HIGH DOORS
- GRACIOUS TURNED STAIRCASE
- EXPANSIVE GREAT HALL WITH 12' CEILING
- CHEFS KITCHEN WITH MORNING ROOM
- 2ND STAIRCASE FROM GREAT ROOM
- PRIVATE FIRST FLOOR LIBRARY
- BED CHAMBER WITH LARGE SITTING ROOM
- 3 ADDITIONAL BEDROOMS WITH BATHS
- INCLUDED BONUS ROOM
- 3 CAR SIDE ENTRY GARAGES WITH 8' HIGH DOORS

